

Historic Viewpoints

Use the numbered historic viewpoints to help you find your way around the town. The corresponding historical references will give an idea of some of the town's history, features and modern facilities.

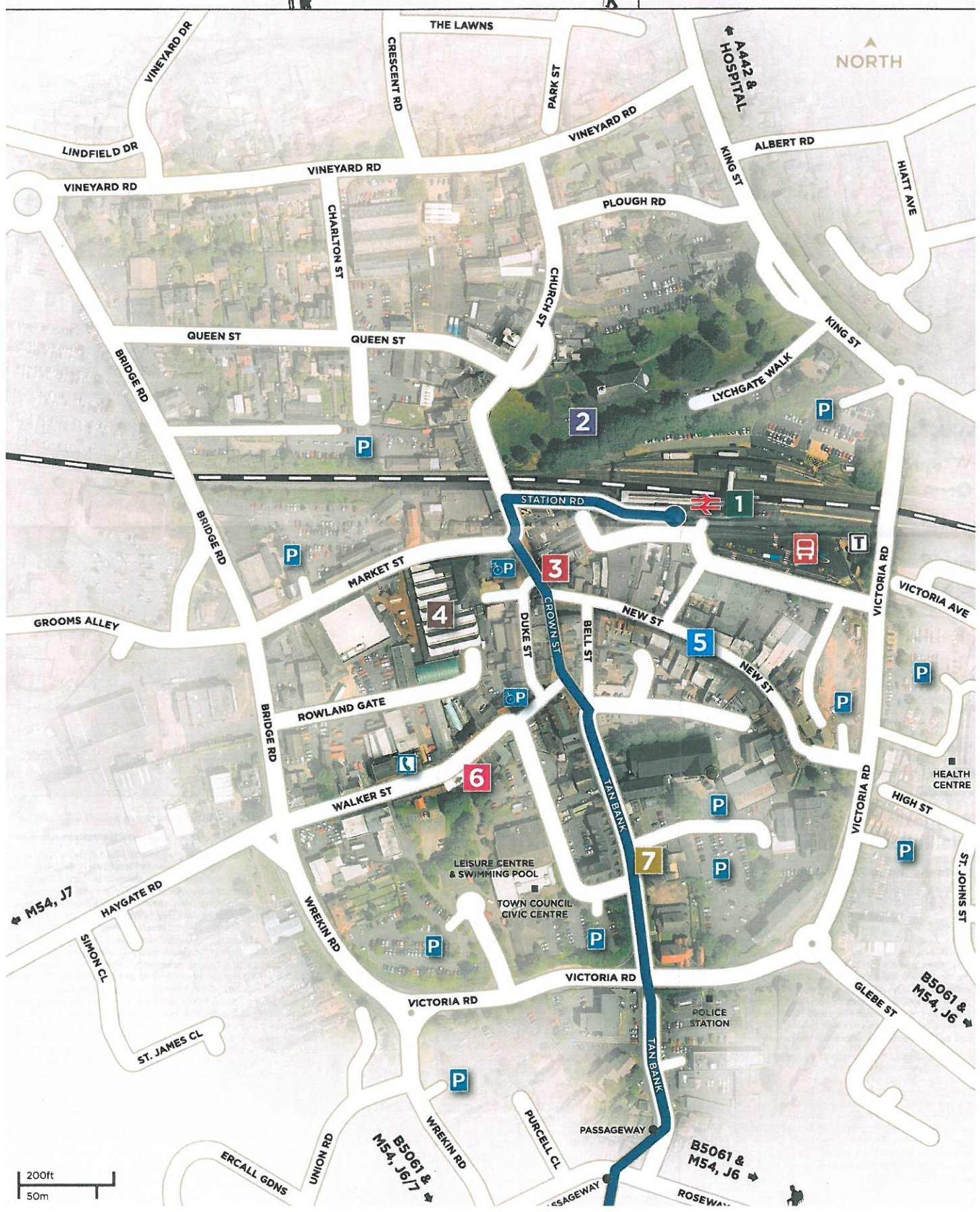
The **blue** walk route will lead you towards The Wrekin, part of the Shropshire Hills Area of Outstanding Natural Beauty.

Various routes around and up The Wrekin can be found on the reverse of this leaflet.

- 1** Wellington Railway Station
- 2** All Saints Church
- 3** Market Square
- 4** Wellington Market
- 5** New Street
- 6** Walker Street
- 7** Tan Bank

Map Key

- Train Station
- Bus Station
- Car Parks
- Cycle Parks
- Rail Route
- Public Toilets
- Public Telephones
- Roads and Streets
- Suggested walk route from the Train Station to around The Wrekin and Forest



200ft
50m